



HENDERSON LAND DEVELOPMENT
COMPANY LIMITED

— Sustainability Report 2022 —



Innovation is an important driving force for enhancing our sustainability and business growth, and this year Henderson Land continued to go all out for a greener and more sustainable future for all. During 2022, the Group continued to embed our G.I.V.E. strategies, namely **Green for Planet, Innovation for Future, Value for People** and **Endeavour for Community**, into all aspects of our operations, taking another step forward towards our 2030 Sustainability Vision.



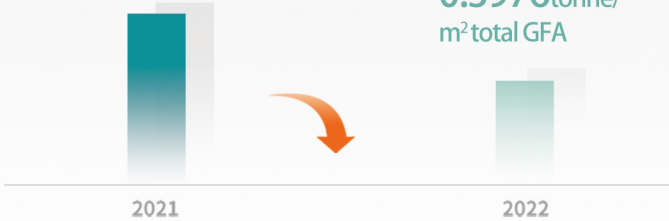
SD Transcript



Materials Used from Construction Sites

0.6275tonne/
m² total GFA

0.3976tonne/
m² total GFA



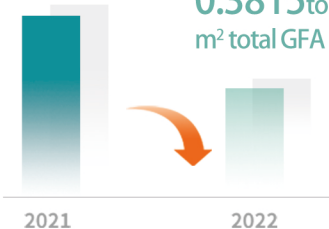
Reduced 37%

Intensity of total construction material used

Non-Renewable Materials

0.6202tonne/
m² total GFA

0.3815tonne/
m² total GFA



Reduced 38%

Intensity of non-renewable
materials used

Renewable Materials

0.0073tonne/
m² total GFA

0.0161tonne/
m² total GFA



Increased 121%

Intensity of renewable
materials used



Environmental Performance

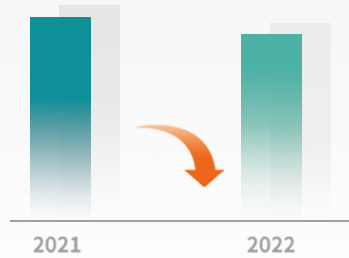
0.0638
tCO₂e/
m² total GFA



Reduced **13%**

GHG Emission Intensity

135kWh/
m² total GFA



Reduced **10%**

Building Energy
Consumption Intensity

0.6476m³/
m² total GFA

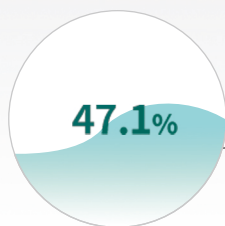


Reduced **16%**

Building Water
Consumption Intensity



Gender Equality in the Workplace

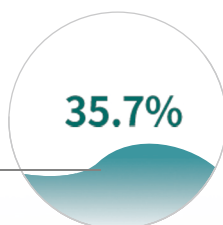


Female Workforce
5337 people

Accounting for 47.1% of
total employees



Managerial
Position



35.7% are Female

and

99.7% are Chinese; 0.3% are non-Chinese



Philanthropy



Cash Contributions

HK\$22 million

Offered 4 separate land plots occupying a combined total of 1.25 million square feet to facilitate the Government's implementation of anti-epidemic measures

The first developer in Hong Kong to support the Government's transitional housing



Accolade



HKQAA: Sustainability Rating of AA+

Sustainalytics : ESG Low Risk

Asia Pacific Leadership in Green Building Awards 2022

- Business Leadership in Sustainability Award

Hong Kong ESG Reporting Awards 2022

- Outstanding ESG Improvement Award - Grand Award
- Excellence in ESG Governance - Commendation
- Excellence in Social Positive Impact - Commendation
- GRESB X HERA Excellence for Real Estate - Commendation

Bloomberg Businessweek/
Chinese Edition and Deloitte
ESG Leading Enterprise Awards 2022

- ESG Leading Enterprise Awards
- Leading Environmental Initiative Awards
- Leading Social Initiative Awards

Green for Planet

Building a Green Portfolio
Reducing our impact on the environment



Committed to setting **near-term company-wide emission reductions** in line with climate science with the SBTi to support the Paris Agreement

Completed the **first carbon credit transaction** on HKEX's Core Climate marketplace

Adopted MiMEP method in construction works to **minimises on-site works, reduce carbon emissions and waste**

Cumulatively achieved

- 63 BEAM Plus
- 19 BEAM
- 16 LEED
- 10 GBDL
- 1 GBL



Achieved numerous accolades:

- Green Building Award 2021
- Green Building Leadership (Developer) - Pioneer Award
- World Financial Centre in Beijing has achieved Parksmart Pioneer certification
- Henderson Metropolitan in Shanghai has achieved TRUE Platinum certification



Innovation for Future

Shaping a Smarter Future
Creating a smart built environment enabled by innovation and technology



The Henderson was awarded **WiredScore and SmartScore platinum certifications**, making it among the first commercial projects in Hong Kong to have attained such certifications

Received both Global and Hong Kong **Most Innovative Knowledge Enterprise Award** for two consecutive years



Kong Ha Wai transitional housing project was completed in late 2022



Patented a new feature, **Air Quality Enhancing and Conditioning System - Liquid Desiccant Cooling** to improve air quality while saving more than 20% energy usage



Value for People

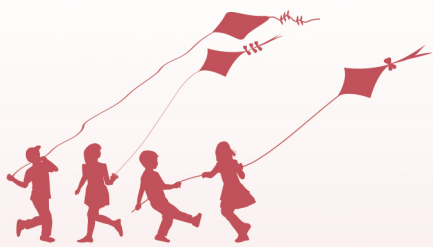
Creating a Caring Culture
Being a caring employer
who looks after our people
and our partners

Became the **first batch of**
“**OSH Strategic Partners**” of
Occupational Safety and Health
Council to demonstrate our
commitment in fostering a
safety-first culture

Cumulatively achieved
13 WELL
4 China Healthy Building Design Labels



One Innovale was the first
residential development in
Hong Kong to obtain **China**
Healthy Building Design
Label (2021 version) **Platinum**
Rating



Endeavour for Community

Establishing a Liveable Community, providing a more liveable environment that enhances well-being and quality



Pledged full support for the HKSAR Government's **Strive and Rise Programme** by contributing a total of **HK\$25 million** through the Lee Shau Kee Foundation, providing mentors and resources to help underprivileged students strive for upward mobility



The Lee Shau Kee Foundation **donated HK\$7.2 million** to HKU for the establishment of the "HKU Lee Shau Kee Top Athletes Scholarship"



Concluded an **industry-first HK\$100 million bilateral social loan** with China Construction Bank (Asia) Corporation Limited



Offered 4 separate land plots occupying a combined total of **1.25 million square feet** to facilitate the Government's implementation of anti-epidemic measures, and **donated HK\$20 million** worth of anti-epidemic supplies through the Henderson Development Anti-Epidemic Fund



Cumulatively secured **over HK\$47 billion** Green and Sustainability-linked Financing





Progress of Sustainability Targets in FY2022

Every step for a better future



Green for Planet

Reduced 11.7% energy intensity for Hong Kong portfolio compared to base year 2019

Reduced 9.1% electricity consumption for mainland China portfolio compared to base year 2021

Reduce 16.7% energy consumption in the common areas of 14 of our commercial properties managed by Goodwill compared to base year 2015, **3 years ahead of schedule**

Anticipating to **reduce at least 20% and 30% water consumption** for all new residential and office developments respectively



Innovation for Future

All new developments are adopting **digital** and **smart** building features

Adopted three new innovative products at new construction projects: **Patented protective coating**, **Eco partition** and **Bio-inspired silicone sealant**



Value for People

>97% customer satisfaction rate

Outperformed the industry with an accident frequency rate of **6.9** (<7) out of 1,000 workers



Endeavour for Community

Contributed **>112,000 service hours**

Linkedin



Instagram



Facebook



WeChat

